

Install RMySQL on Windows 7 for RStudio.

RMySQL allows users to perform MySQL operations through R and RStudio. Unfortunately, the installation procedure is not extremely straight forward. The following guide is intended to help alleviate some of the confusion that novice users may have. This guide assumes that MySQL is not currently installed.

Required software (click to visit)

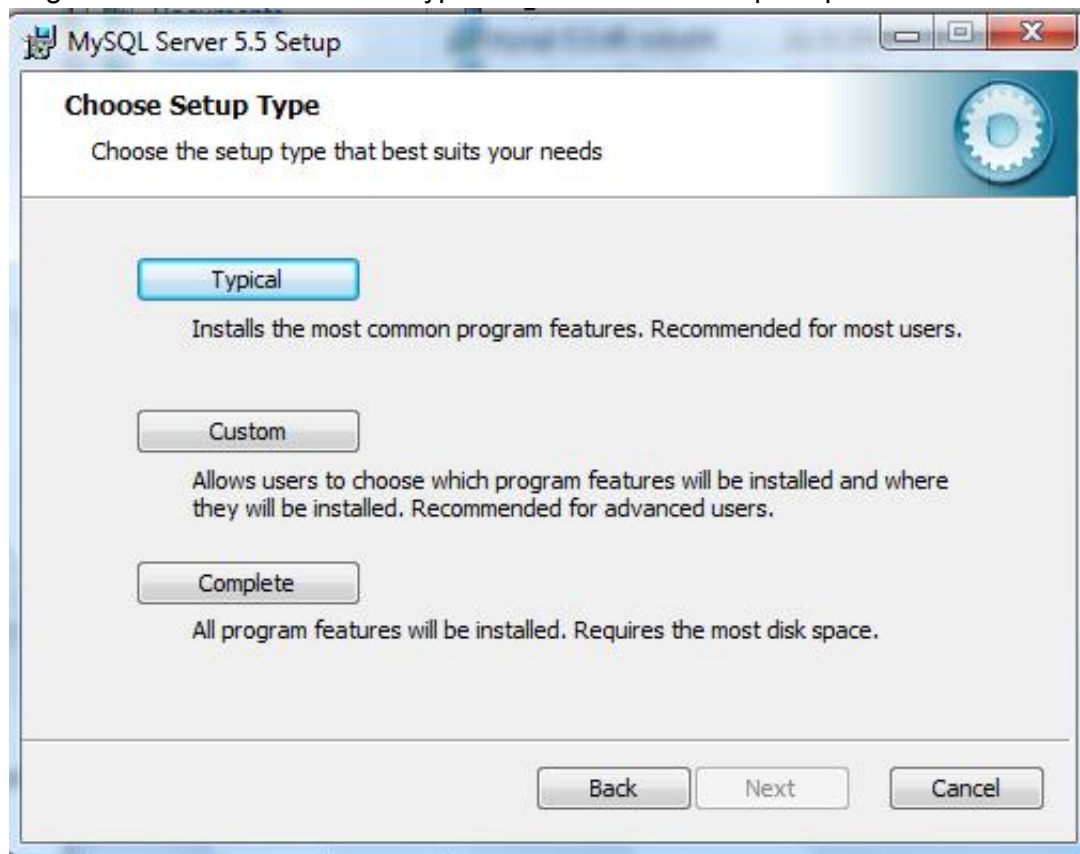
1. R (<http://cran.r-project.org>)
2. RStudio (<http://www.rstudio.com/>)
3. MySQL Server 5.5 (<http://dev.mysql.com/downloads/mysql/5.5.html#downloads>)
4. RTools31.exe (<http://cran.r-project.org/bin/windows/Rtools/>)
5. RMySQL (<http://cran.r-project.org/web/packages/RMySQL/index.html>)

Step 1:

Download and install R and RStudio. These are very straight forward.

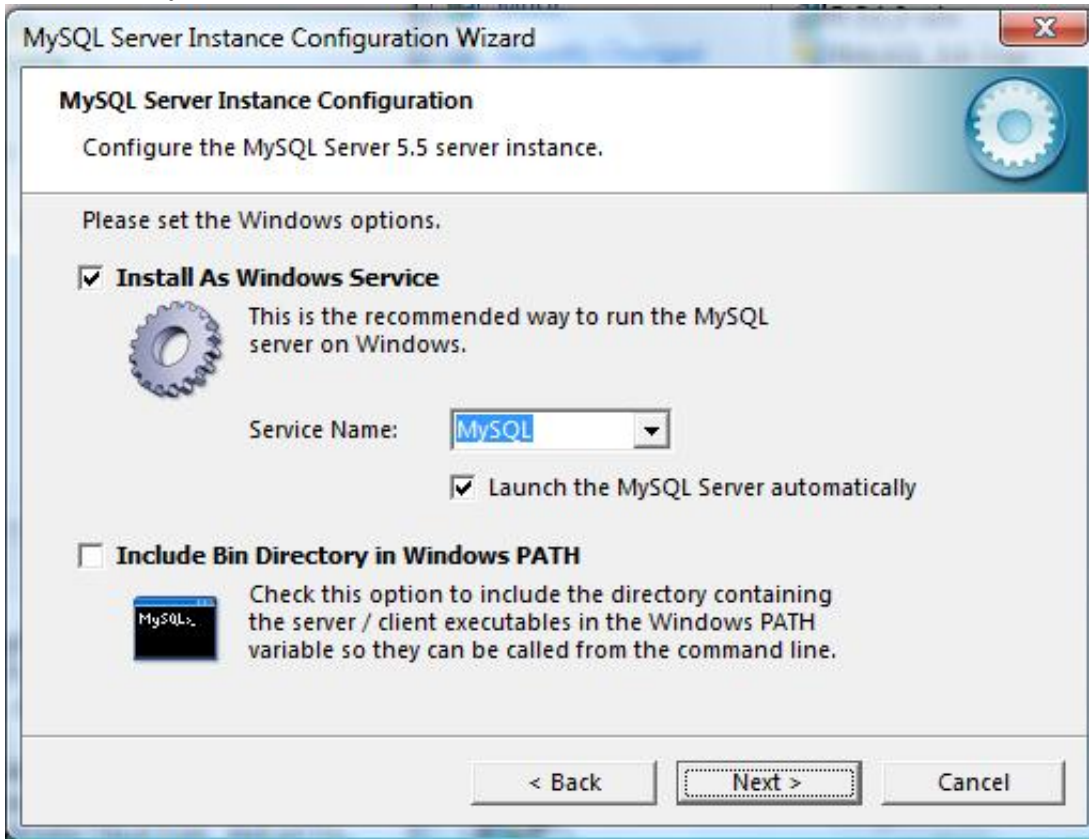
Step 2:

1. Download MySQL Server 5.5. You will have several options of what to download. I recommend the “MSI Installer” for your machine (32 or 64 bit).
2. Begin installation and select “Typical Installation” when prompted.

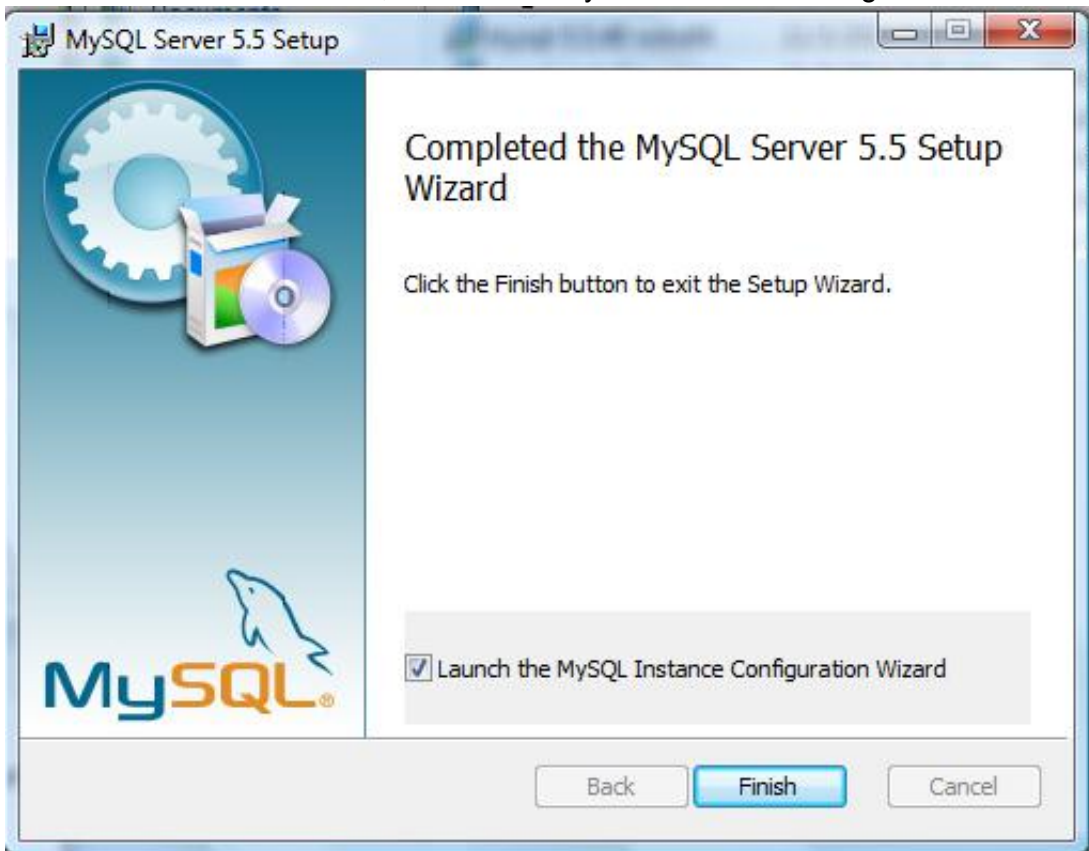


3. When prompted, choose to install MySQL as a windows service, and choose to launch the MySQL server

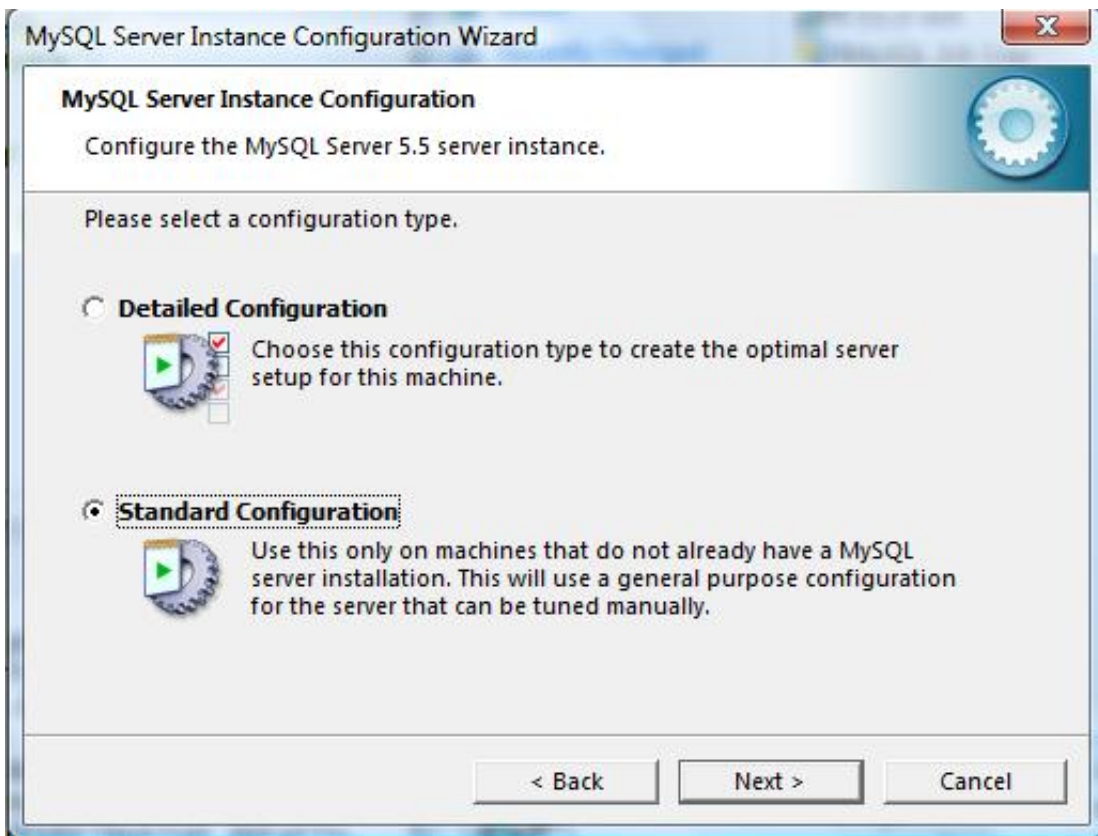
automatically.



4. At the end of the installation, launch the "MySQL Instance Configuration Wizard".



5. Choose the "Standard Configuration".



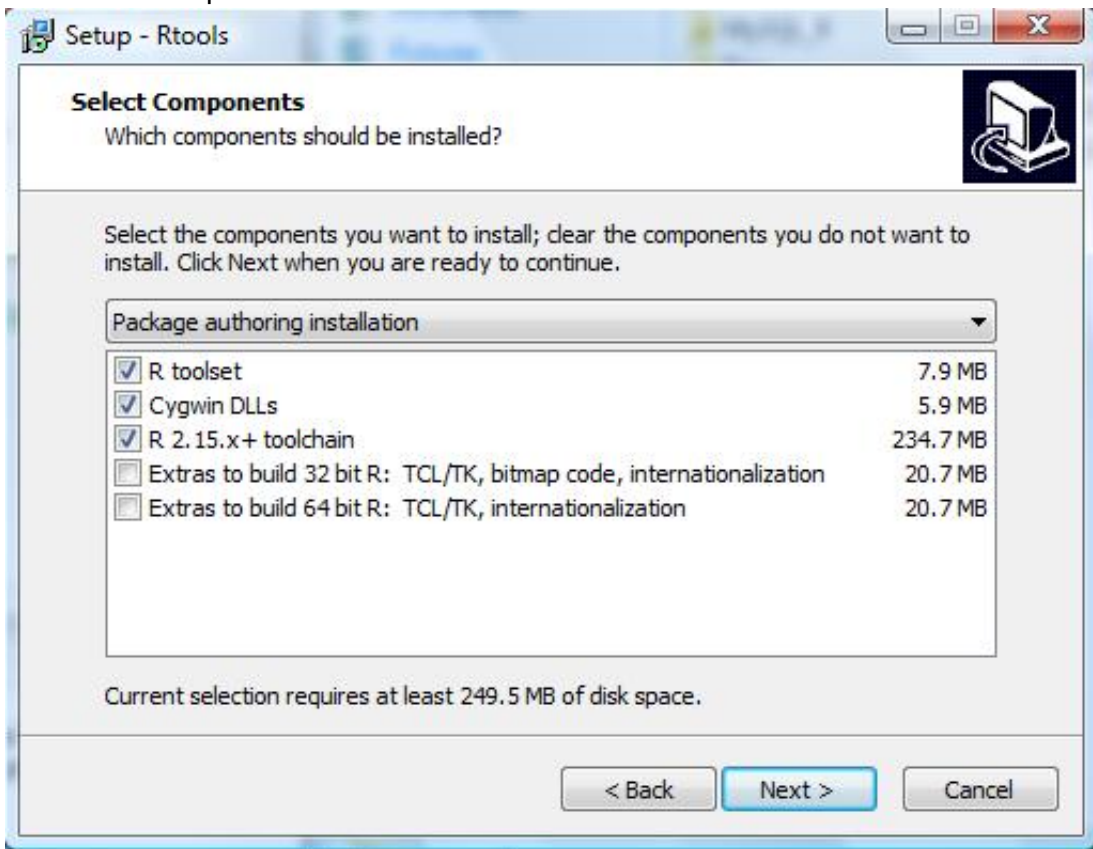
6. Modify your security settings by entering a password.



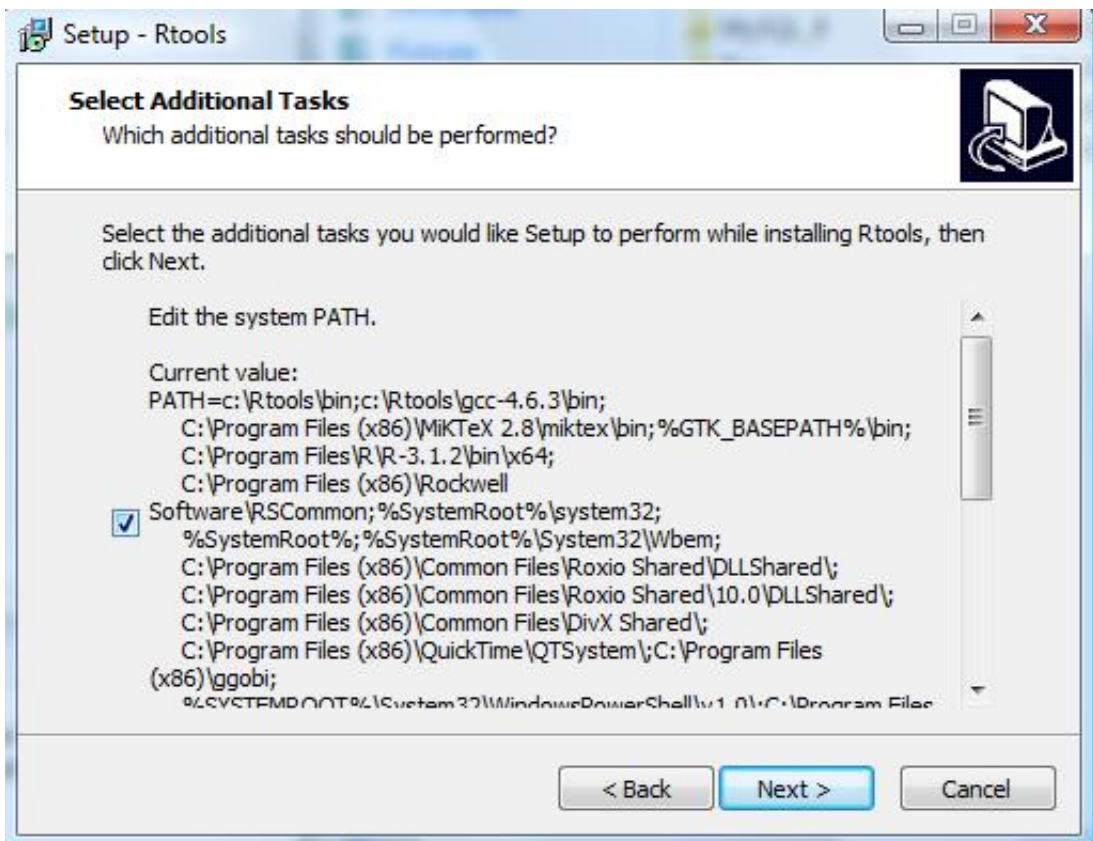
Step 3:

1. Download RTools31.exe and begin installation.

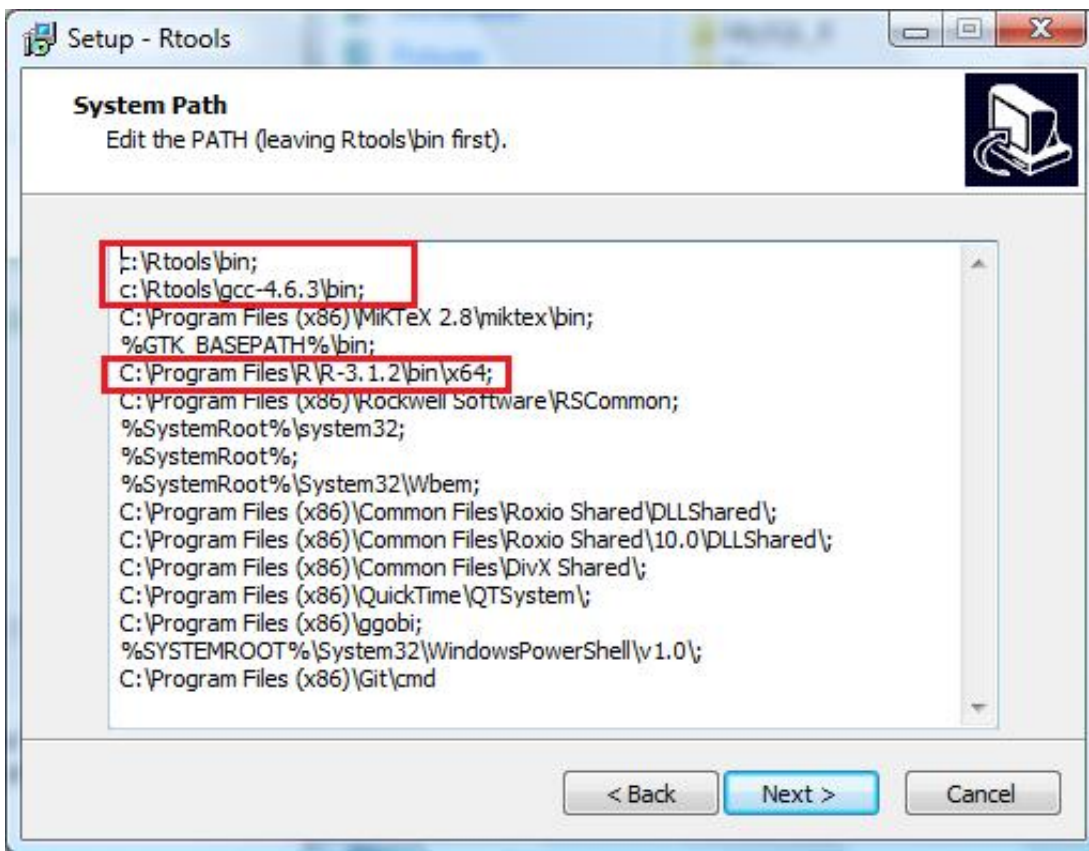
2. Select the components to install as shown below.



3. Check the two boxes on the “Select Additional Tasks” screen. **Only one box is shown below, make sure both are selected.**



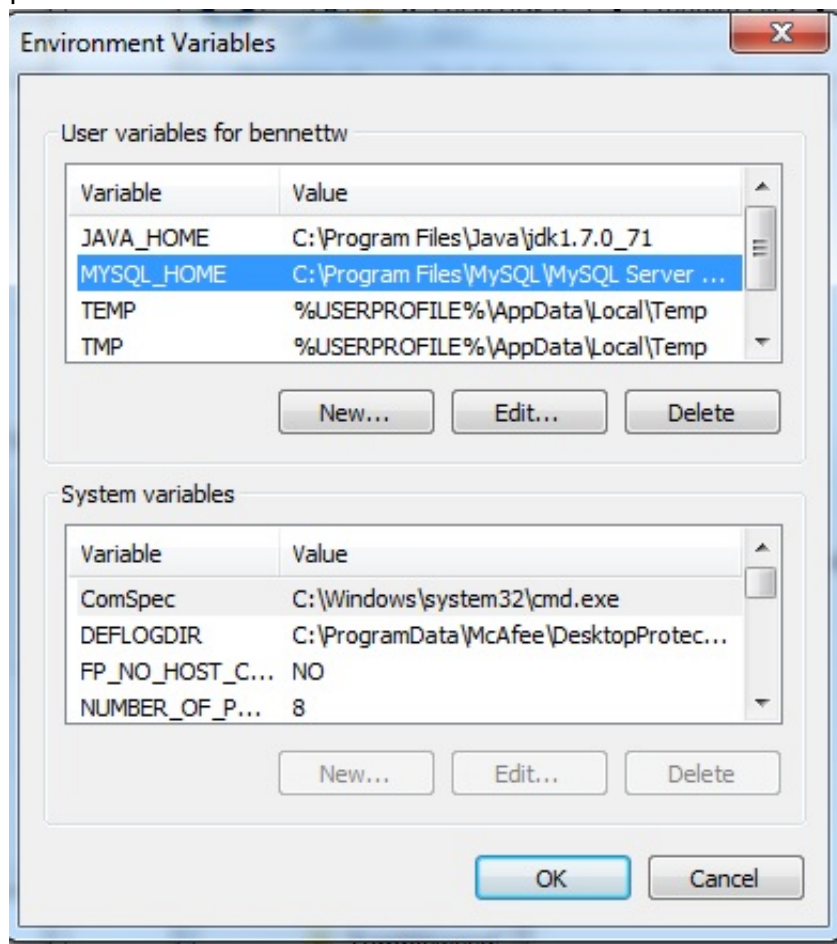
4. Make sure that some variant of the paths outlined in red are present, with “Rtoolsbin” on top.



Step 4:

1. Locate the "Environment Variables" for your account.
(This can be found through the control panel -> User Accounts -> Change my environment variables)

2. Add “MYSQL_HOME = C:\Program Files\MySQL\MySQL Server 5.5”, where the path should reflect your particular install location.



Step 5:

1. Copy “libmysql.dll” from “C:\Program Files\MySQL\MySQL Server 5.5\lib”, or your particular install location.
2. Paste “libmysql.dll” in “C:\Program Files\MySQL\MySQL Server 5.5\bin”, or your particular install location.

This is done because RMySQL expects to find “libmysql.dll” in the bin and it currently exists in the lib

Step 6:

1. Download RMySQL from the “Package source”. It should end in “.tar.gz”
2. In RStudio, navigate to “Install Packages...” under the “Tools” menu heading.
3. Choose the option to instal from a “Package Archive File”, and select the RMySQL package source.

